





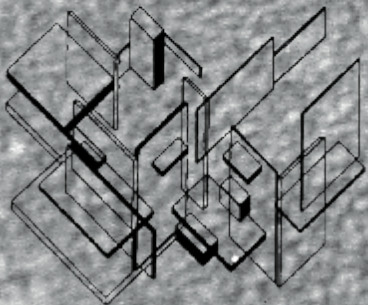
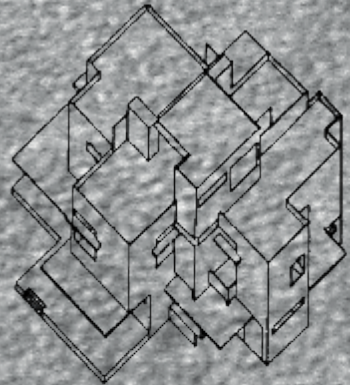
- ORWELLIAN•
- WORLD•
- LANDSCAPE•

'UTOPOS'

Accompanying Zine

Photography:

Al Hodgson
Callum Painter
Daryl Mersom
James Griffiths
Luke Frisby
Tom Mangham



Jim Silver - Wallie



Francis Peters - Ollie



Jim Silver - Ollie BS Wallride



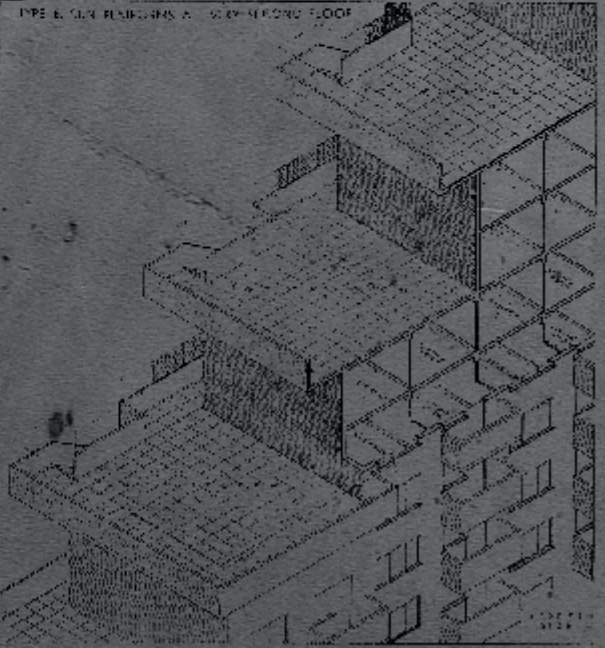


Jim Silver - Ollie



walls
that
can be
erected
carried
buildings

would be amply provided for by constructing the division walls between flats in 4½" cellular brickwork thus stiffening the whole frame at intervals of 23 feet throughout its length.



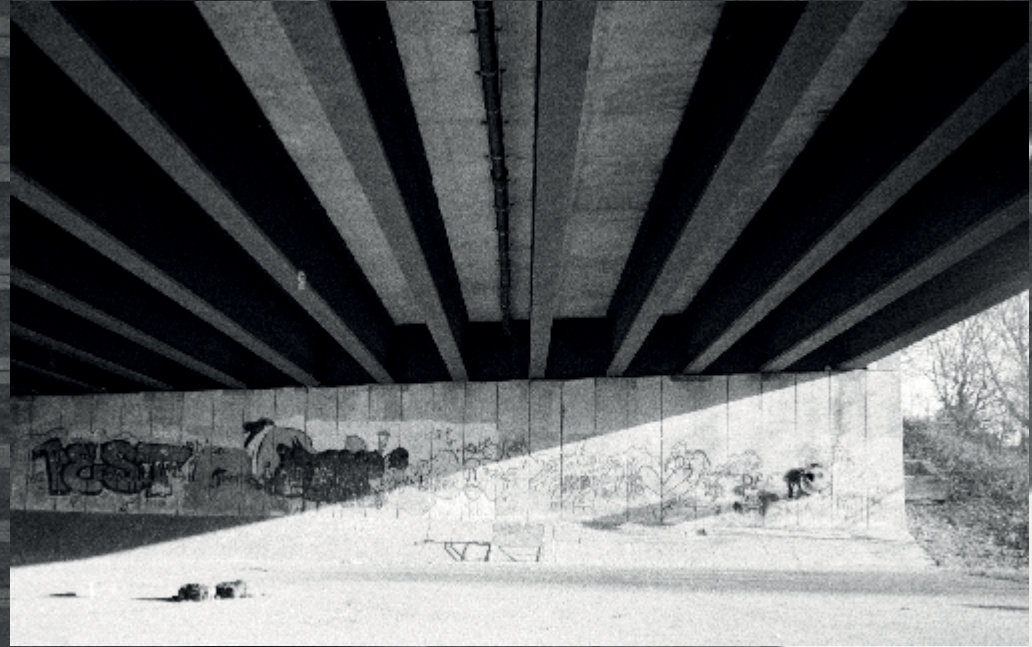




Joe Coward - Nosemanual



THE GROUND
TILTS AND
BENDS AT
ODD ANGLES

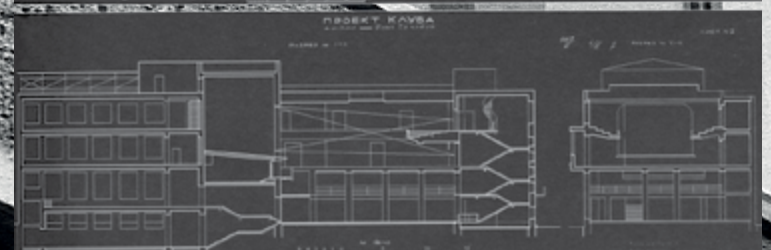
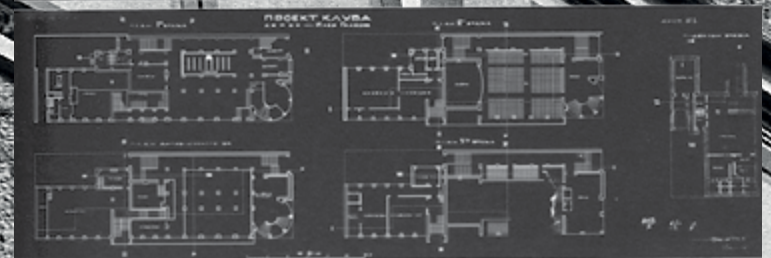
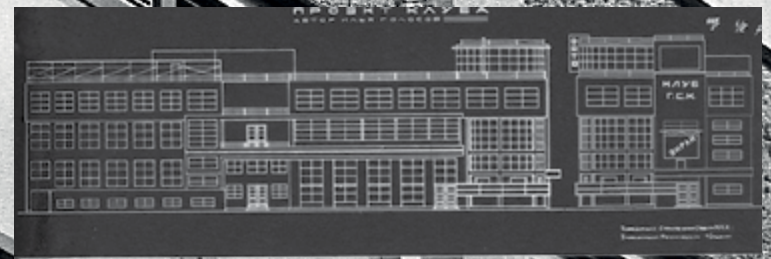




PARIS GARDEN

BENNETT STREET

Typical floor plan.





ownhouses
temporary homes
2 bedroom flats

9832
.co.uk

GROUP

2016

Fig 3.

"It was always difficult to determine the age of a London building. Anything large and impressive, if it was reasonably new in appearance, was automatically claimed as having been built since the Revolution, while anything that was obviously of earlier date was ascribed to some dim period called the Middle Ages. The centuries of capitalism were held to have produced nothing of any value. One could not learn history from architecture any more than one could learn it from books. Statues, inscriptions, memorial stones, the names of streets - anything that might throw light upon the past had been systematically altered."

ORWELLIAN WORLD LANDSCAPE

owlskateboards.co.uk